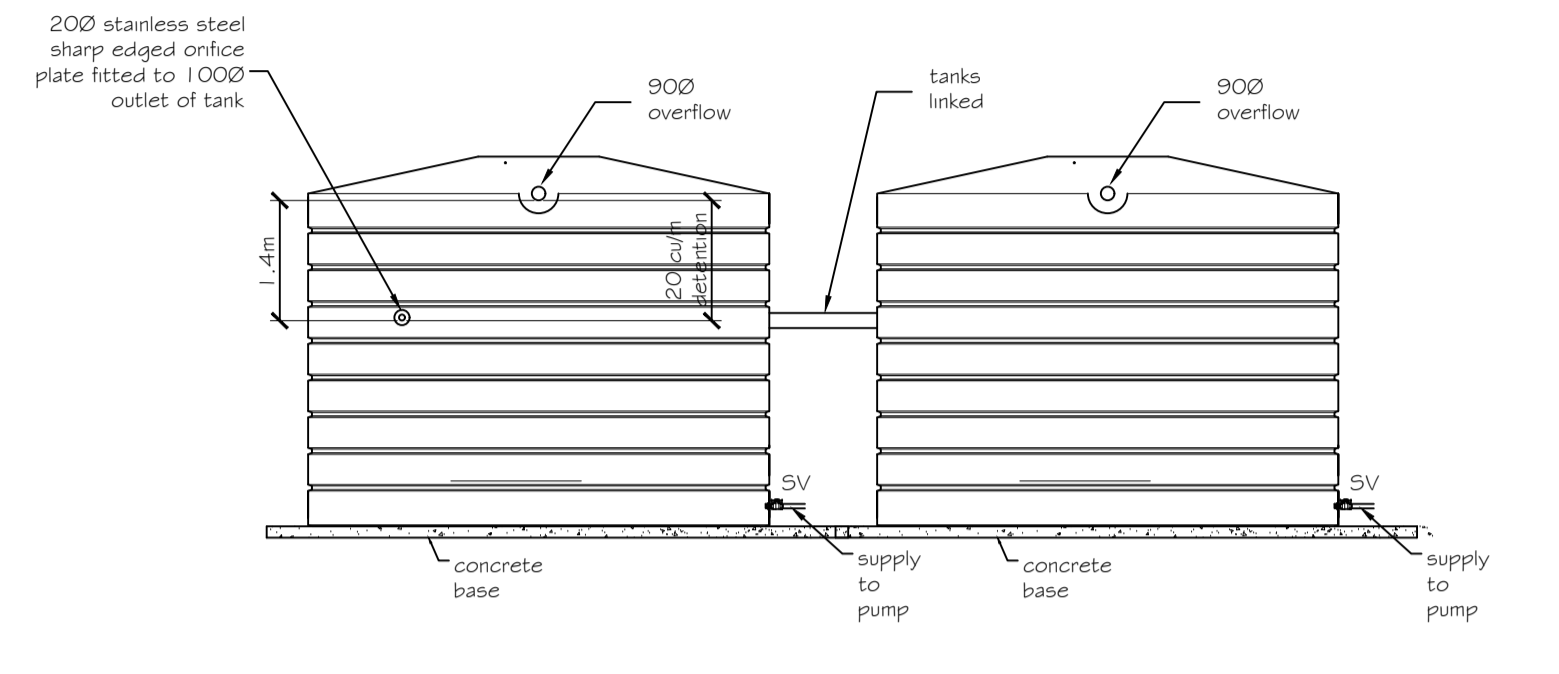
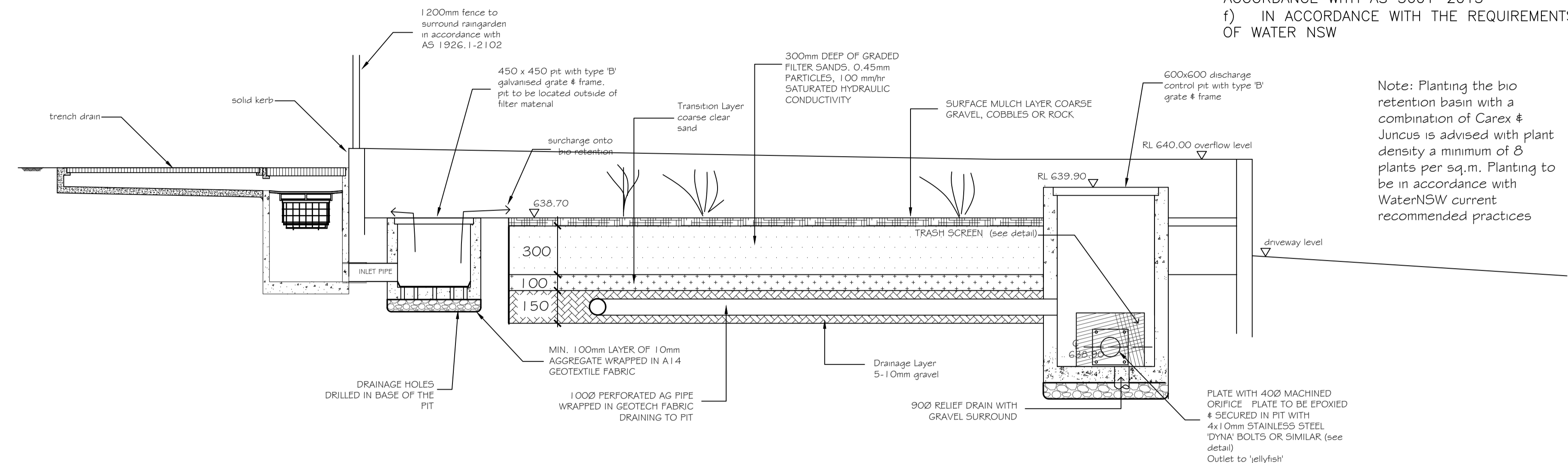


GENERAL NOTE
 ALL PLUMBING & DRAINAGE SHALL BE UNDERTAKEN IN STRICT ACCORDANCE WITH

- a) AS 3500 NATIONAL PLUMBING & DRAINAGE CODE
- b) NATIONAL CONSTRUCTION CODE
- c) LOCAL GOVERNMENT AUTHORITY
- d) RELEVANT AUSTRALIAN STANDARDS
- e) NATURAL GAS INSTALLATION SHALL BE IN ACCORDANCE WITH AS 5601-2013
- f) IN ACCORDANCE WITH THE REQUIREMENTS OF WATER NSW

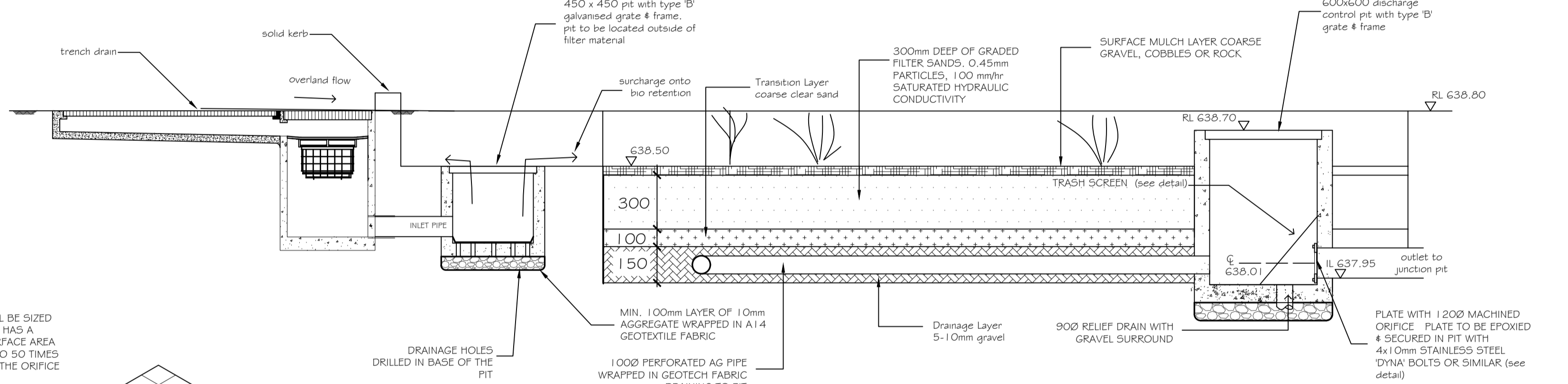


2 of 22,000 Litre Rainwater Tanks Incorporating OSD Not to Scale

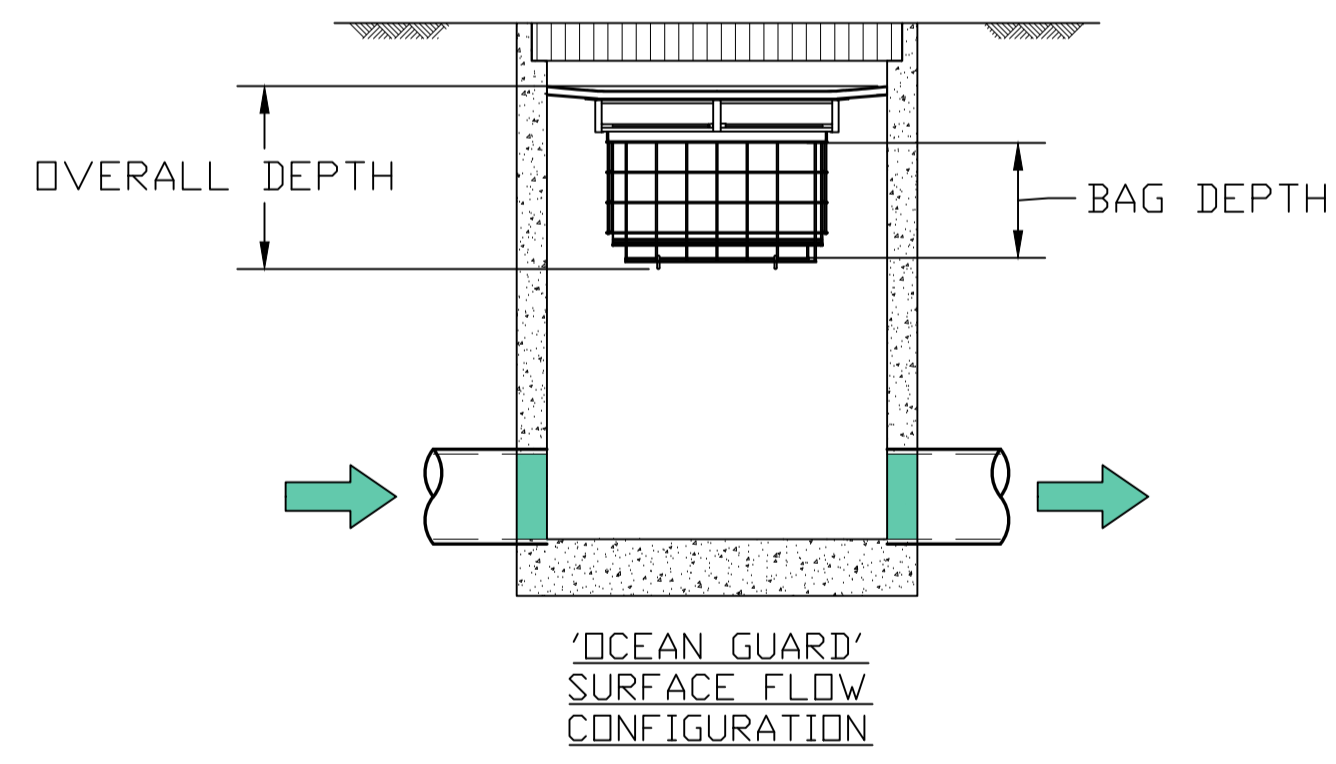


OFFSET SECTION A-A THROUGH BIO RETENTION / DETENTION BASIN Not to Scale

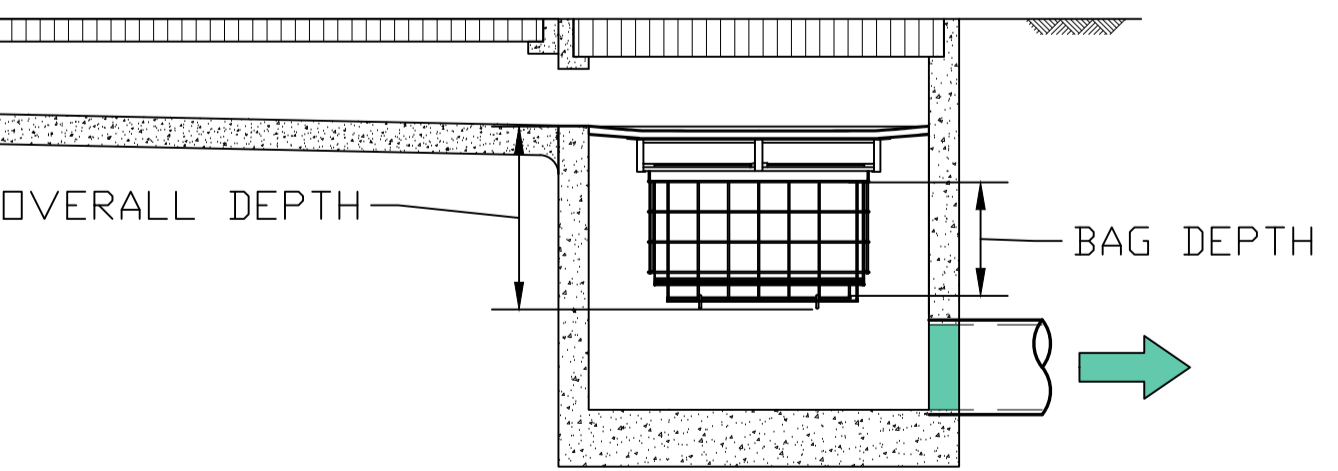
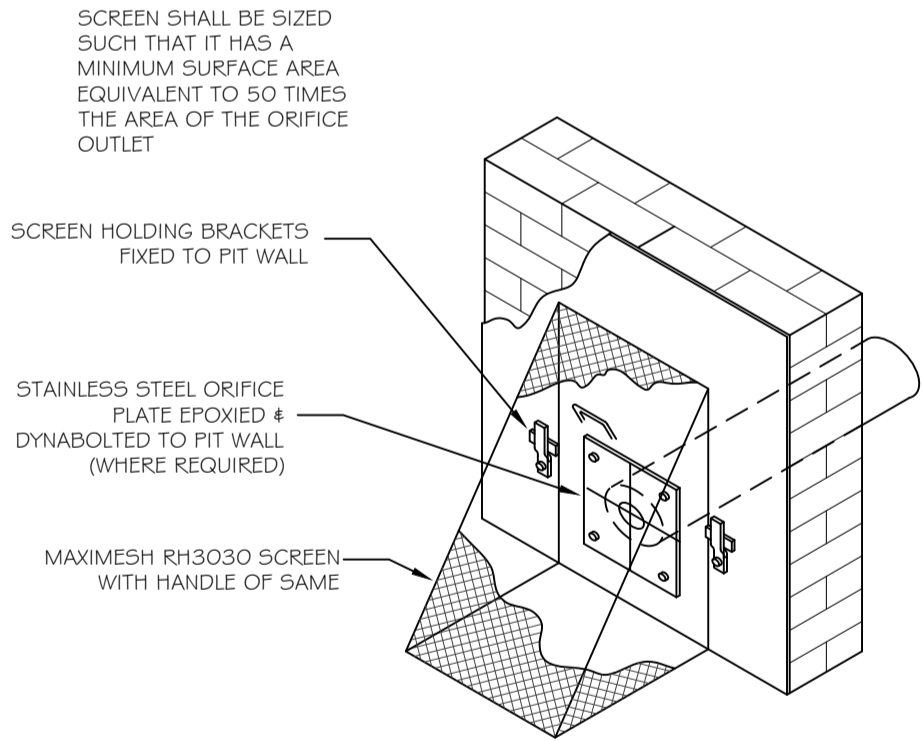
Note: Planting the bio retention basin with a combination of Carex & Juncus is advised with plant density a minimum of 8 plants per sq.m. Planting to be in accordance with WaterNSW current recommended practices



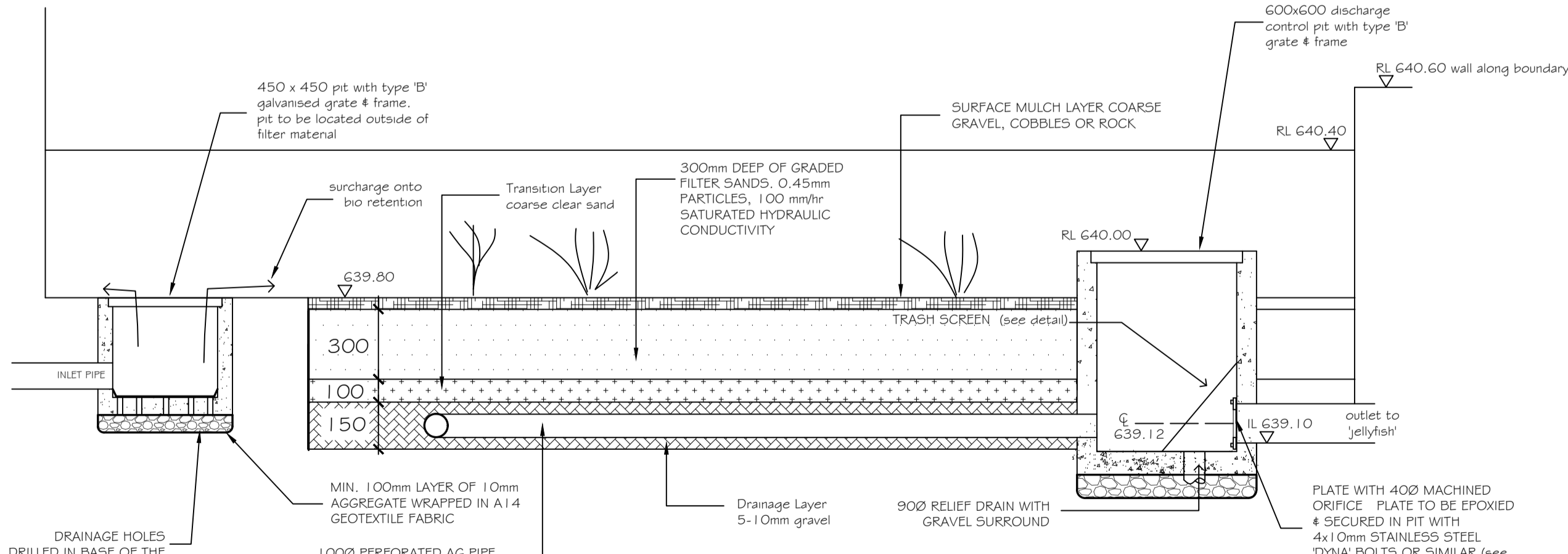
OFFSET SECTION B-B THROUGH BIO RETENTION / DETENTION BASIN Not to Scale



'OCEAN GUARD' SURFACE FLOW CONFIGURATION



'OCEAN GUARD' GRATED STRIP DRAIN CONFIGURATION



SECTION C-C THROUGH BIO RETENTION / DETENTION BASIN Not to Scale

Note: Planting the bio retention basin with a combination of Carex & Juncus is advised with plant density a minimum of 8 plants per sq.m. Planting to be in accordance with WaterNSW current recommended practices

REFER TO ARCHITECTS DRAWINGS, STRUCTURAL ENGINEERS DRAWINGS & OTHER HYDRAULIC DRAWINGS FOR DETAILS

ALL DRAWINGS ARE DIAGRAMMATIC ONLY

| SYMBOL | DESCRIPTION | SYMBOL | DESCRIPTION |
|---------|------------------------|--------|----------------------|
| DQ 20ø | drinking quality water | S | sewer |
| WW 15ø | warm water | S- | stormwater |
| ← | hot water | TW | trade waste |
| NG | natural gas | e | electricity |
| PH 100ø | fire hydrant | sub | sub soil |
| HR 25ø | hose reel | T | telstra |
| GM | gas meter | irr | irrigation |
| | water meter | R | roof water harvested |

THIS DRAWING IS FOR GUIDANCE ONLY. ALL FINAL DETAILS MUST MEET SITE CONDITIONS RELEVANT AUTHORITIES & APPLICABLE AUSTRALIAN & LOCAL CODES. CONTRACTORS MUST VERIFY ALL LEVELS & DIMENSIONS ON THE JOB BEFORE COMMENCING ANY WORK OR MAKING SHOP DRAWINGS. FIGURED DIMENSIONS ARE TO BE USED. SCALED DIMENSIONS ARE TO BE VERIFIED. THIS DRAWING SHALL BE READ IN CONJUNCTION WITH THE HYDRAULIC SERVICES SPECIFICATION. THIS DRAWING IS COPYRIGHT © ADAMS & ASSOCIATES - HYDRAULICS & MAY NOT BE USED OR REPRODUCED IN ANY WAY WITHOUT OUR PRIOR WRITTEN PERMISSION.

New Industrial Sheds
 27 Ross St
 Goulburn

Site Hydraulics
 * Stormwater Details

Adams & Associates - Hydraulics
 hydraulic, fire & mechanical consultants

Z Direction Pty Ltd
 PO Box 2094
 Mullavey NSW 2536
 Ph 0414 873 354

ACN 101 185 531
 ABN 49 101 185 531
 email: rob@adamshydraulics.com.au

| | | | |
|--|-------------------------|-------|------------|
| DRAWING NUMBER | 02-36076 | ISSUE | A |
| SCALE | 1 : 150 / as per detail | DATE | 12.12.2024 |
| PROJECT NUMBER | | | |
| DRAWN FOR & ON BEHALF OF ADAMS & ASSOCIATES - HYDRAULICS | | | |